

EFFECTIVE USE OF PESTICIDES IN MANAGEMENT OF INTEGRATED PRODUCTION AND DEGRADERS (IPM)



Takashi Kotegawa

Expert BULK

09/17/2015

1

QUESTION

Do you know the name of this parasite?



The answer is: Track (moth) and French ... English
diamondback moth Academic ...

09/17/2015

2



Chou Saga (9 / April / 2015)

The pesticide "Karate" was applied once during a 1-2 weeks, but the sprouts were severely attacked by the *Diamondback moth*.

Why is this happening?

09/17/2015

3

hypothesis 1

The *diamondback moth* has developed a resistance against the pesticide "Karate".

hypothesis 2

Natural enemies of *diamondback moth* were killed by the pesticide "Karate".

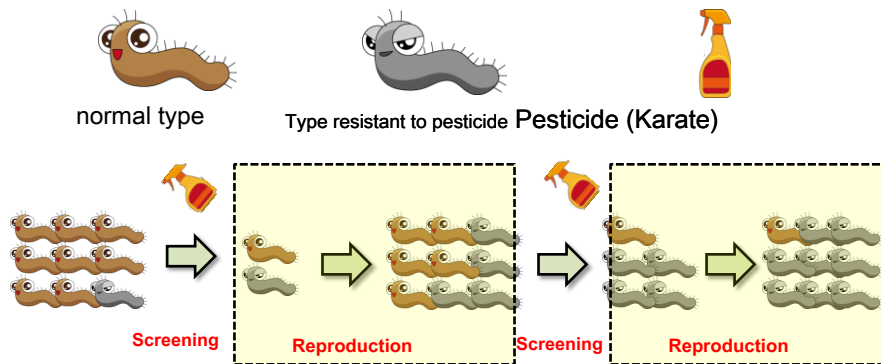
09/17/2015

4

Hypothèse 1

The *diamondback moth* has developed resistance to the pesticide "Karate".

Mécanisme d'acquisition de résistance aux Pesticides



09/17/2015

The rate of reproduction is the key ! 5

Hypothèse 1

The *diamondback moth* has developed resistance to the pesticide "Karate".

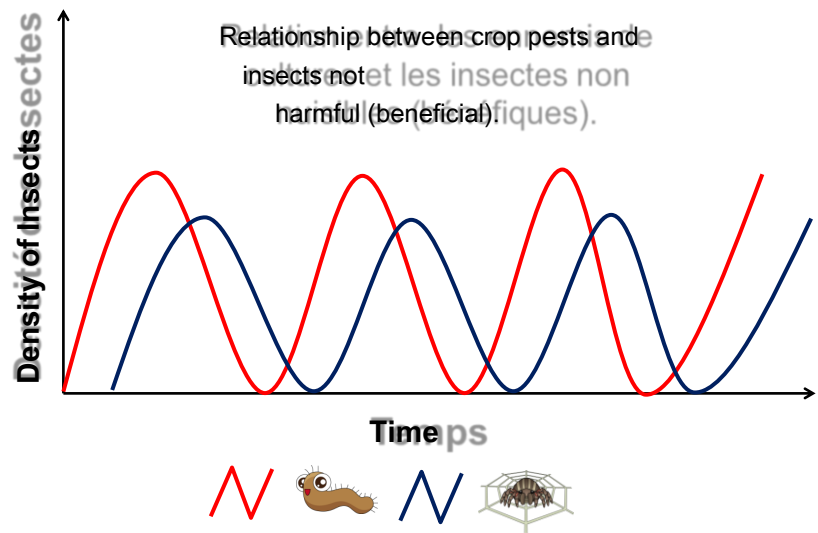


09/17/2015

6

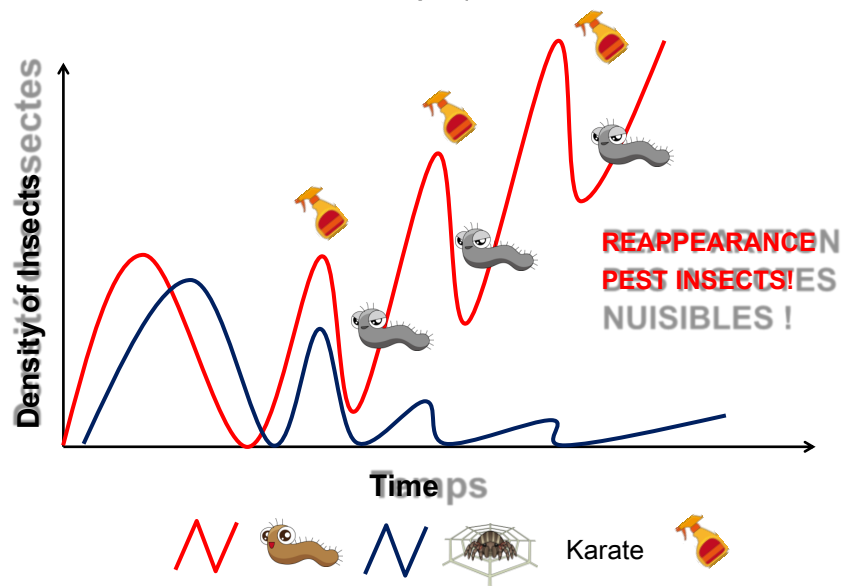
Hypothèse 2

Natural enemies of *diamondback moth* were killed by the pesticide "Karate".



Hypothèse 2

Natural enemies of *diamondback moth* were killed by the pesticide "Karate".



Hypothèse 2

Natural enemies of *diamondback moth* were killed by the pesticide "Karate".

REAPPEARANCE OF INSECT PESTS

This is the emergence of a sudden predators of harmful population number, usually caused by the application of a broad spectrum pesticide (non-selective) killing natural enemies, players of biological control.



⇒ how to avoid this?

- Pesticides types sold in Niger



Type Pyrethroid

Karate

Active substance

cypermethrin



Type Organophosphate

SUNPYRIFOS

Active substance

Chlorpyrifos-Ethyl



Type neonicotinoid

TITAN

Active substance

acetamiprid

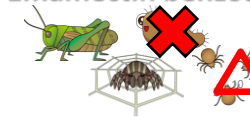


Type Macrolide

EMACOT

Active substance

emamectin benzoate



Proposition of a solution

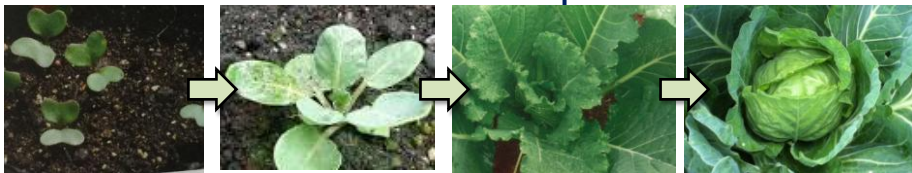
USE of the Pesticide

Macrolide kind

Try not to kill
pas tuer



Use Karate,
Titan,
SUNPYRIFOS
Etc...



A rotating use of pesticides is recommended.

2014/09/29

11

Example: Cabbage plagues Management Manual du chou

Nom	Description	Dégâts	Traitements
Chenilles (ver gris, teigne, borer du chou) - (<i>Agrotis ipsilon</i>) - (<i>Plutella xylostella</i>) - (<i>Hella undalis</i>)	Tête noire, couleur gris à brun clair parcouru de lignes longitudinales brunâtres.	<ul style="list-style-type: none">- Elles dévorent les feuilles- Elles dévorent le cœur des plantules- Elles creusent des galeries dans les pommes	<ul style="list-style-type: none">- Deltaméthrine- Acephate- Kalifol- Karaté
Mildiou (maladie) (<i>Peronospora parasitica</i> f. sp. Brassicae)	Les premiers symptômes se caractérisent par des feuilles mouchetées.	<ul style="list-style-type: none">- Petites taches irrégulières sur les	ébe nèbe de
L'Alternariose (champignon)	Les premiers sympt caractérisent par des taches arrondies, brunes et concentrique qui apparaissent sur les feuilles.	brunes sur les feuilles.	- Manébe

Only the kind Pyrethroid
And the type organophosphate

The Handbook provides a solution, but this is not always the better!

Please ponder well to give better solution to the peasants!

2014/09/29

12